

FLOOR PLAN
1/4" = 1'

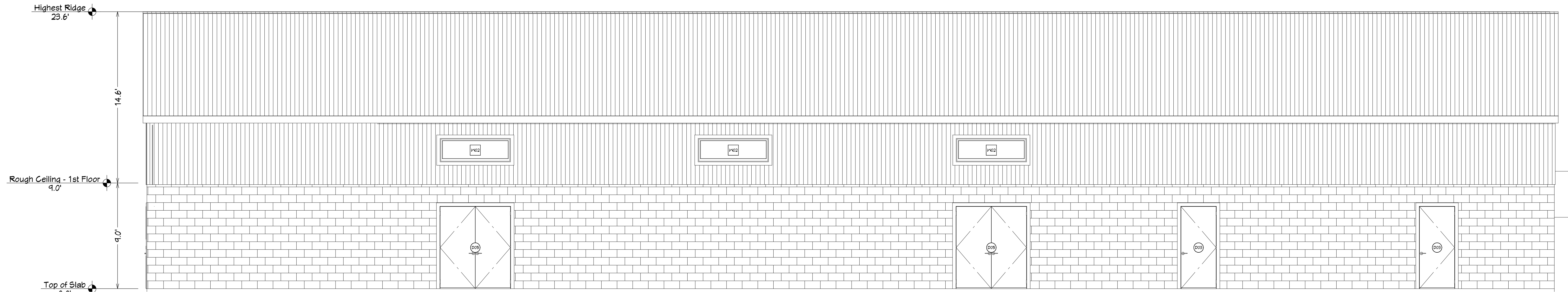
Sheet No. 1
of 3 Sheet(s)

Cornerstone
Design &
Consulting, Inc.
160 XP
Valdosta, GA 31601
229-269-4690

FIRM FOUNDATION CUSTOM
CONSTRUCTION, LLC
304 MILDRED ST.
VALDOSTA, GA 31601
229-561-0082

- GENERAL NOTES:
1. CONTRACTOR TO VERIFY DIMENSIONS PRIOR TO STARTING ANY CONSTRUCTION.
 2. ALL WORK TO COMPLY WITH ALL STATE, LOCAL AND INTERNATIONAL BUILDING CODES.
 3. CONTRACTOR IS RESPONSIBLE FOR ALL STRUCTURAL CALCULATIONS.
 4. VERIFY ELECTRICAL & PLUMBING REQUIREMENTS WITH G.C. PRIOR TO STARTING ANY CONSTRUCTION.

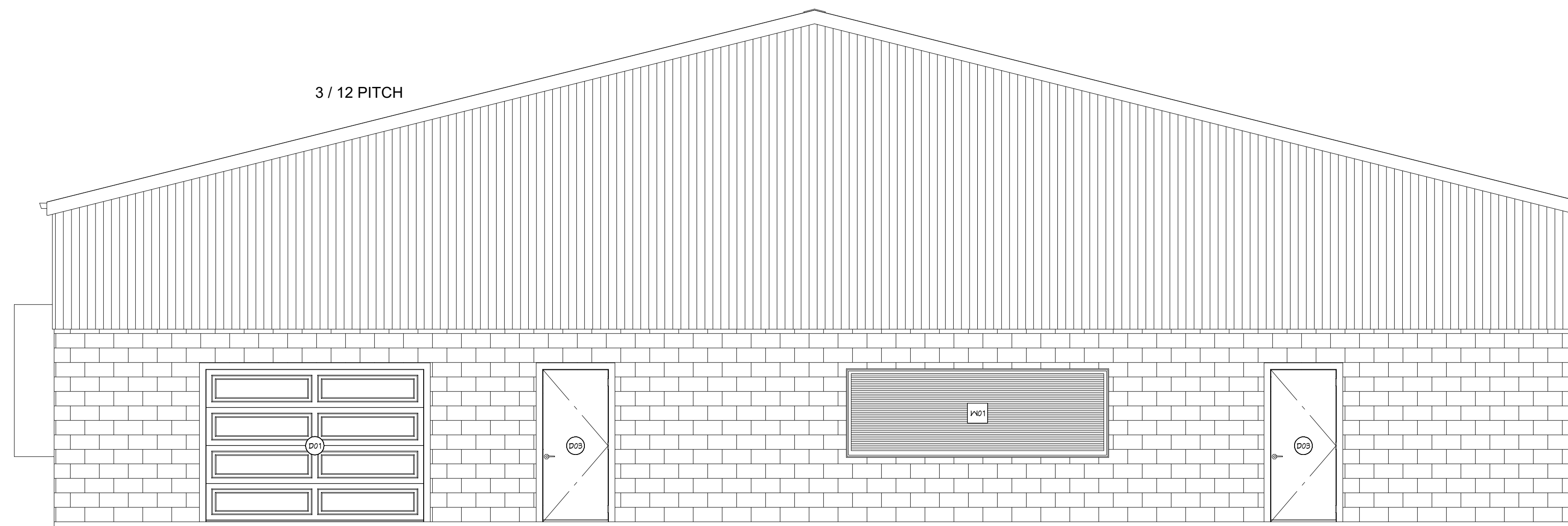
PROJECT:	Hahira School
CADD FILE:	Hahira School
DWG SCALE:	VARIES
DRAWN BY:	P. HOTCHKISS
CHECKED BY:	
DWG DATE:	10/13/2016
REVISIONS:	



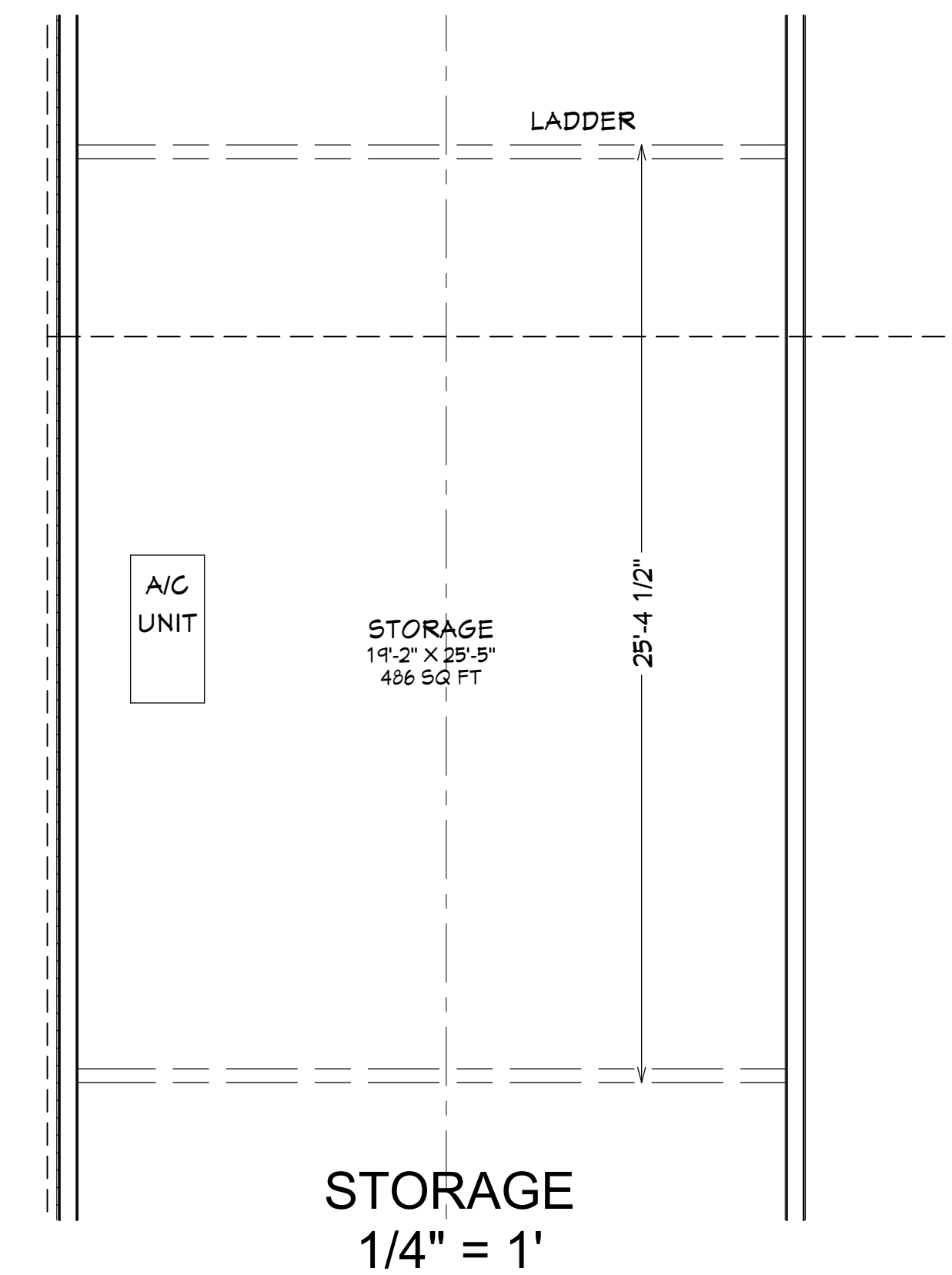
FRONT ELEVATION
1/4" = 1'

DOOR SCHEDULE				
NUMBER	QTY	SIZE	DESCRIPTION	COMMENTS
D01	1	100T0	GARAGE-GARAGE DOOR F01	
D02	4	30T0 R IN	HINGED-SLAB	
D03	4	30T0 L EX	EXT. HINGED-SLAB	
D04	1	60T0 L/R IN	DOUBLE HINGED-SLAB	
D05	2	60T0 L/R EX	EXT. DOUBLE HINGED-SLAB	
D06	5	30T0 L IN	HINGED-SLAB	

WINDOW SCHEDULE				
NUMBER	QTY	SIZE	DESCRIPTION	COMMENTS
W01	1	12040LY	ROLL-UP WINDOW	
W02	6	6020FX	FIXED GLASS	



LEFT ELEVATION
1/4" = 1'



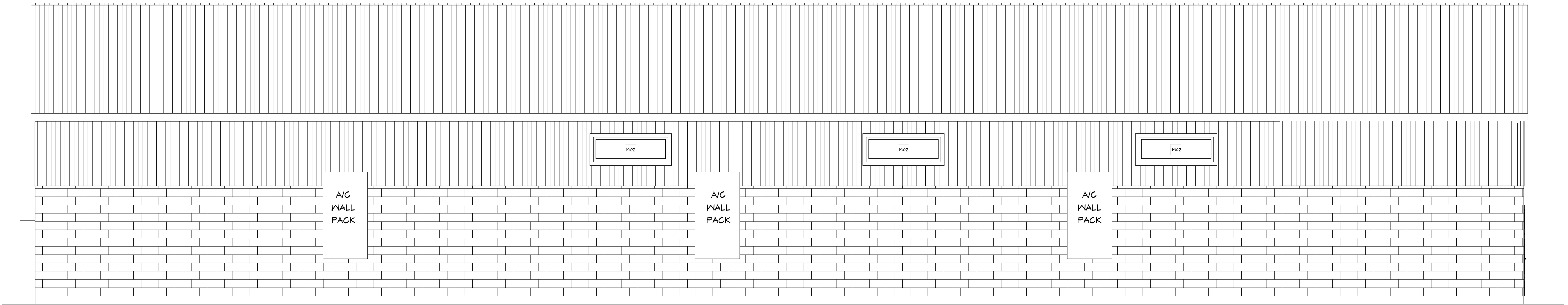
Sheet No.
2
of 3 Sheet(s)

Cornerstone
Design &
Consulting, Inc.
160 XP
Valdosta, GA 31601
229-269-4690

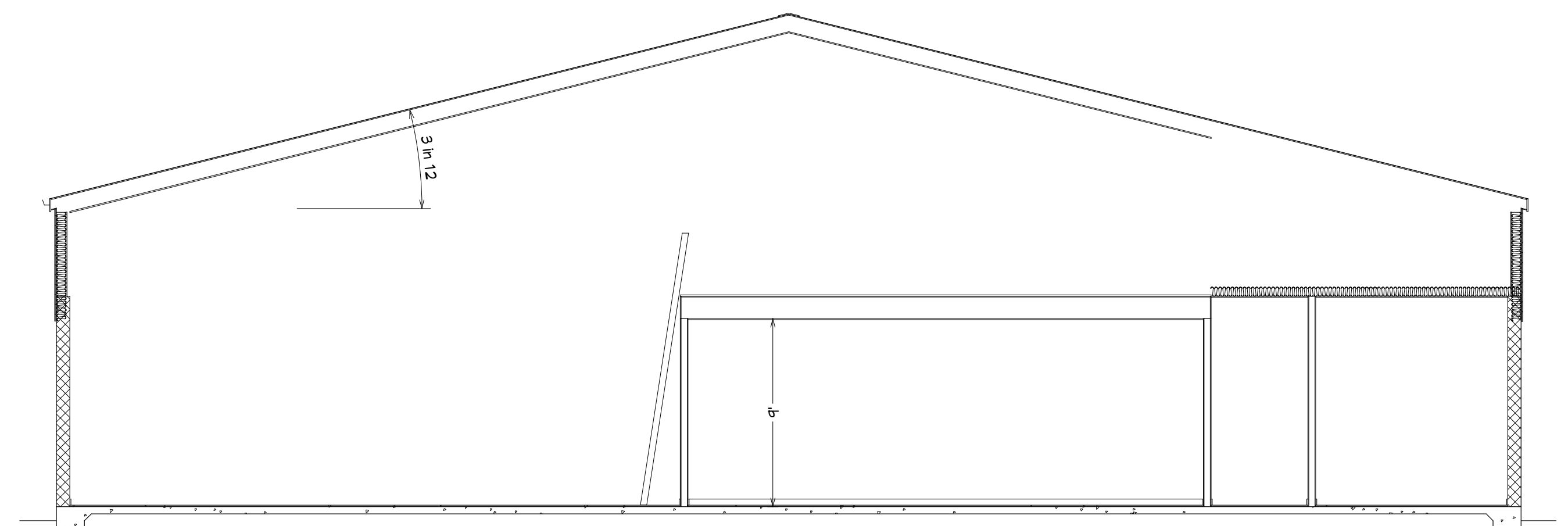
FIRM FOUNDATION CUSTOM
CONSTRUCTION, LLC
304 MILDRED ST.
VALDOSTA, GA 31601
229-561-0082

GENERAL NOTES:
1. CONTRACTOR TO VERIFY DIMENSIONS PRIOR TO STARTING ANY CONSTRUCTION.
2. ALL WORK TO COMPLY WITH ALL STATE, LOCAL AND INTERNATIONAL BUILDING CODES.
3. CONTRACTOR IS RESPONSIBLE FOR ALL STRUCTURAL CALCULATIONS.
4. VERIFY ELECTRICAL & PLUMBING REQUIREMENTS WITH G.C. PRIOR TO STARTING ANY CONSTRUCTION.

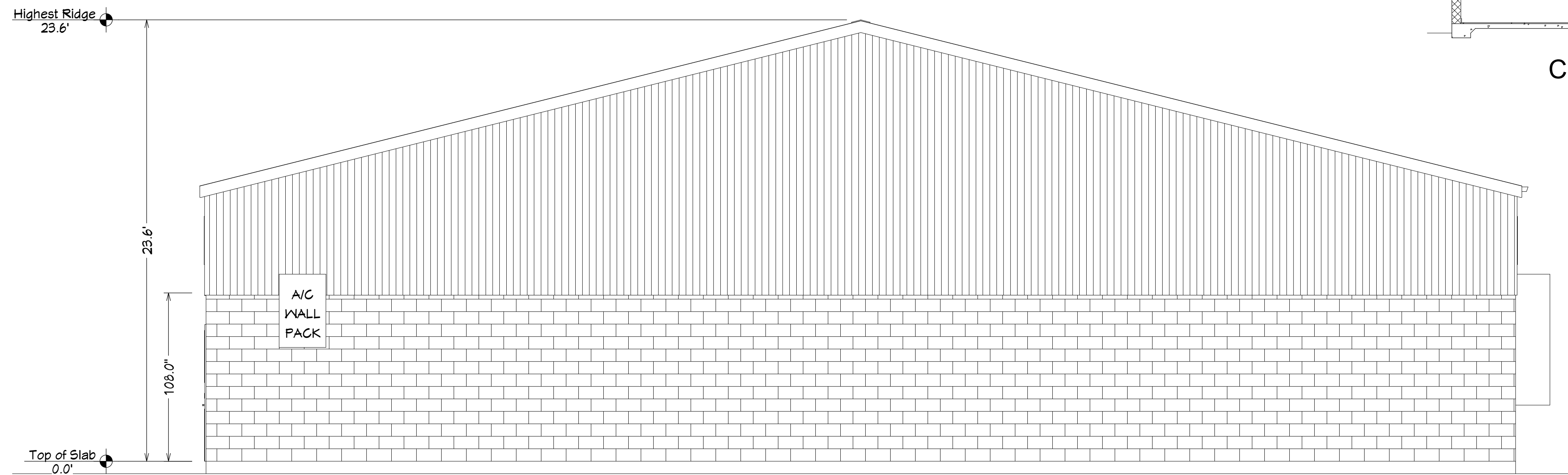
PROJECT:	Hahira School
CADD FILE:	Hahira School
DWG SCALE:	VARIES
DRAWN BY:	P. HOTCHKISS
CHECKED BY:	
DWG DATE:	10/13/2016
REVISIONS:	



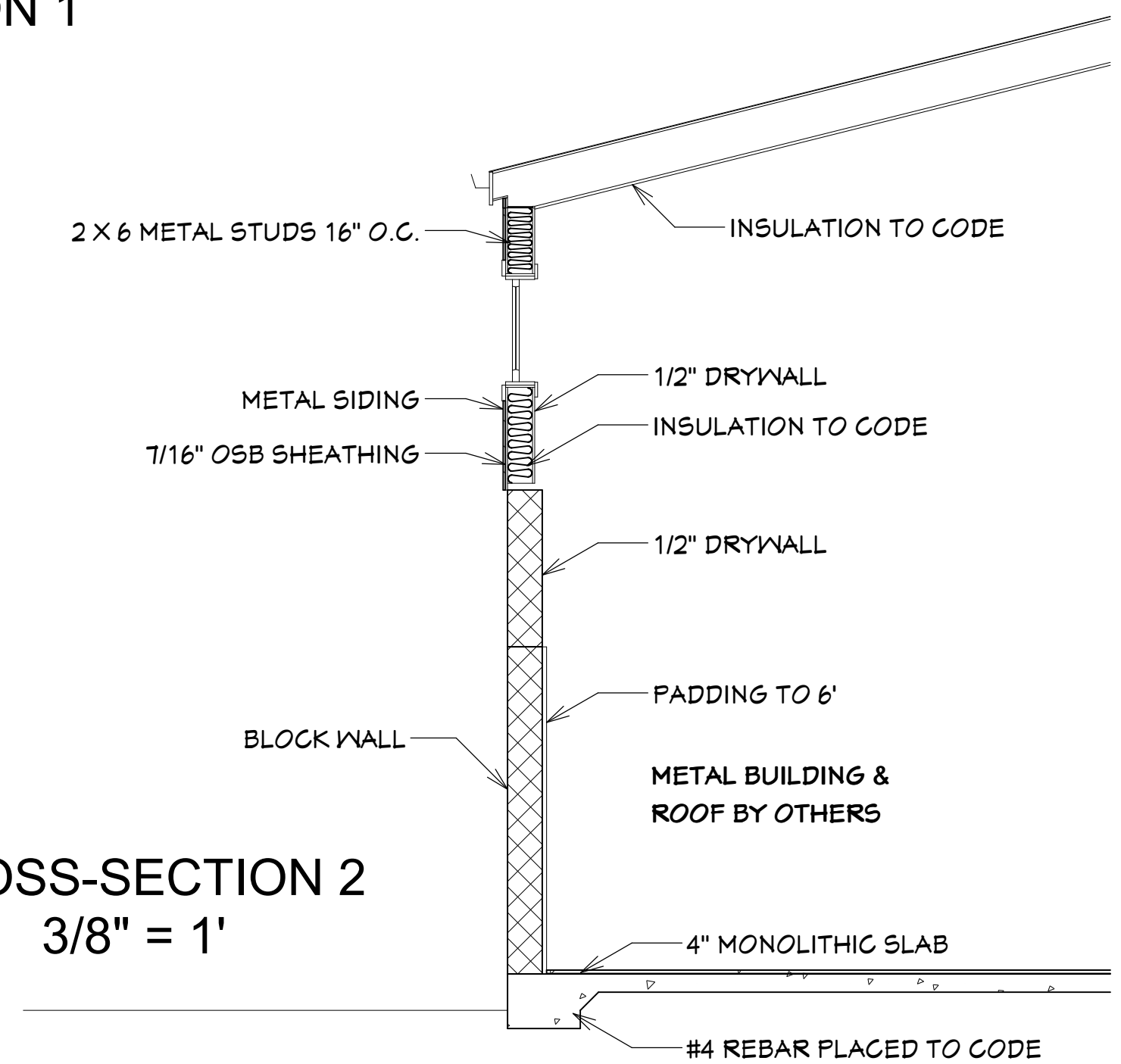
REAR ELEVATION
1/4" = 1'



CROSS-SECTION 1
3/16" = 1'



RIGHT ELEVATION
1/4" = 1'



CROSS-SECTION 2
3/8" = 1'

Sheet No.
3
of 3 Sheet(s)

Cornerstone
Design &
Consulting, Inc.
160 XP
Valdosta, GA 31601
229-269-4690

FIRM FOUNDATION CUSTOM
CONSTRUCTION, LLC
304 MILDRED ST.
VALDOSTA, GA 31601
229-561-0082

GENERAL NOTES:
1. CONTRACTOR TO VERIFY DIMENSIONS PRIOR TO STARTING ANY CONSTRUCTION.
2. ALL WORK TO COMPLY WITH ALL STATE, LOCAL AND INTERNATIONAL BUILDING CODES.
3. CONTRACTOR IS RESPONSIBLE FOR ALL STRUCTURAL CALCULATIONS.
4. VERIFY ELECTRICAL & PLUMBING REQUIREMENTS WITH G.C. PRIOR TO STARTING ANY CONSTRUCTION.

PROJECT:	Hahira School
CADD FILE:	Hahira School
DWG SCALE:	VARIES
DRAWN BY:	P. HOTCHKISS
CHECKED BY:	
DWG DATE:	10/13/2016
REVISIONS:	